

**SITE PLAN**  
SCALE: 1/8" = 1'-0"

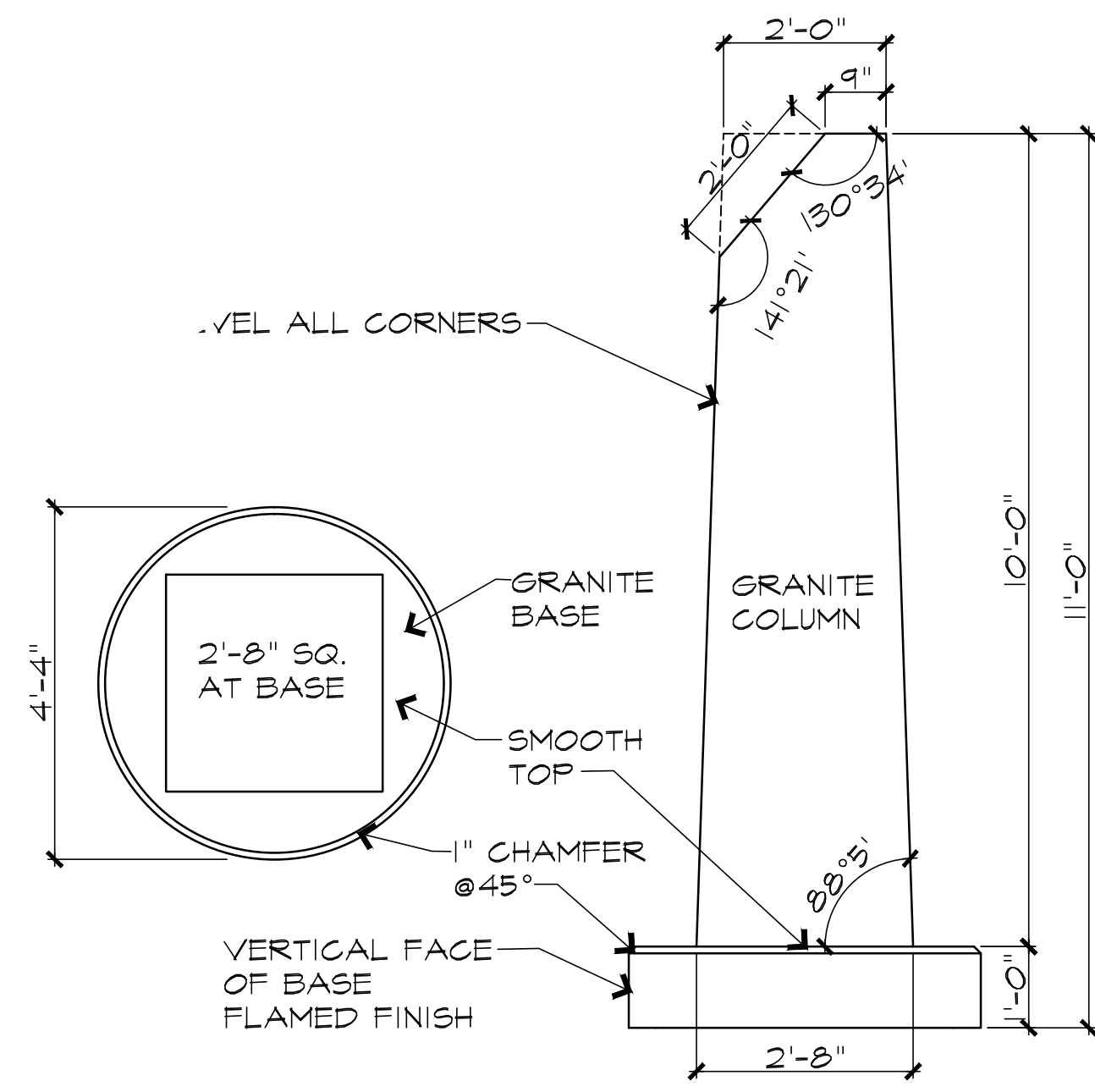
**FOUNDATION PLAN**  
SCALE: 1/8" = 1'-0"

**Bob Woods Architect**  
1473 GRAY BAR DRIVE  
COTTONWOOD, ARIZONA, 86326  
PHONE : (928) 646 - 5989  
FAX : (928) 646 - 5989

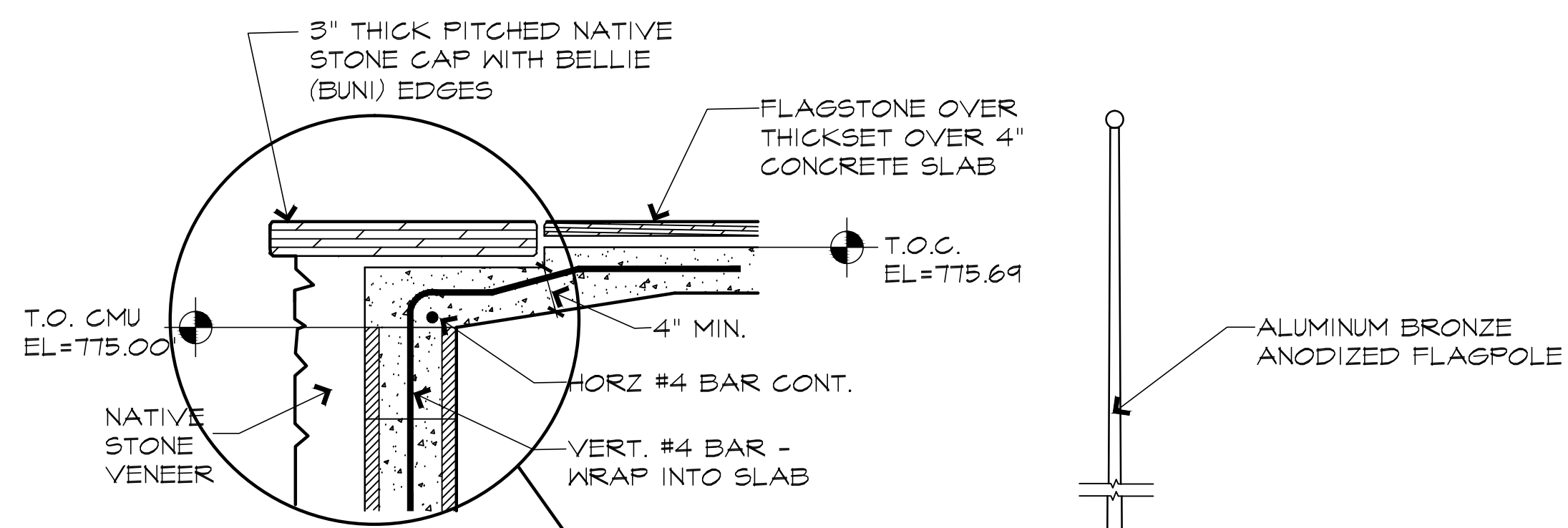
**Ronald Reagan Monument  
Del Punta Viewing Site**  
Vandenberg Air Force Base, California  
For: Riki M. Ellison MDA

**Site Plan  
Foundation Plan**  
SCALE: 1/8" = 1'-0"  
19 MAY 2007

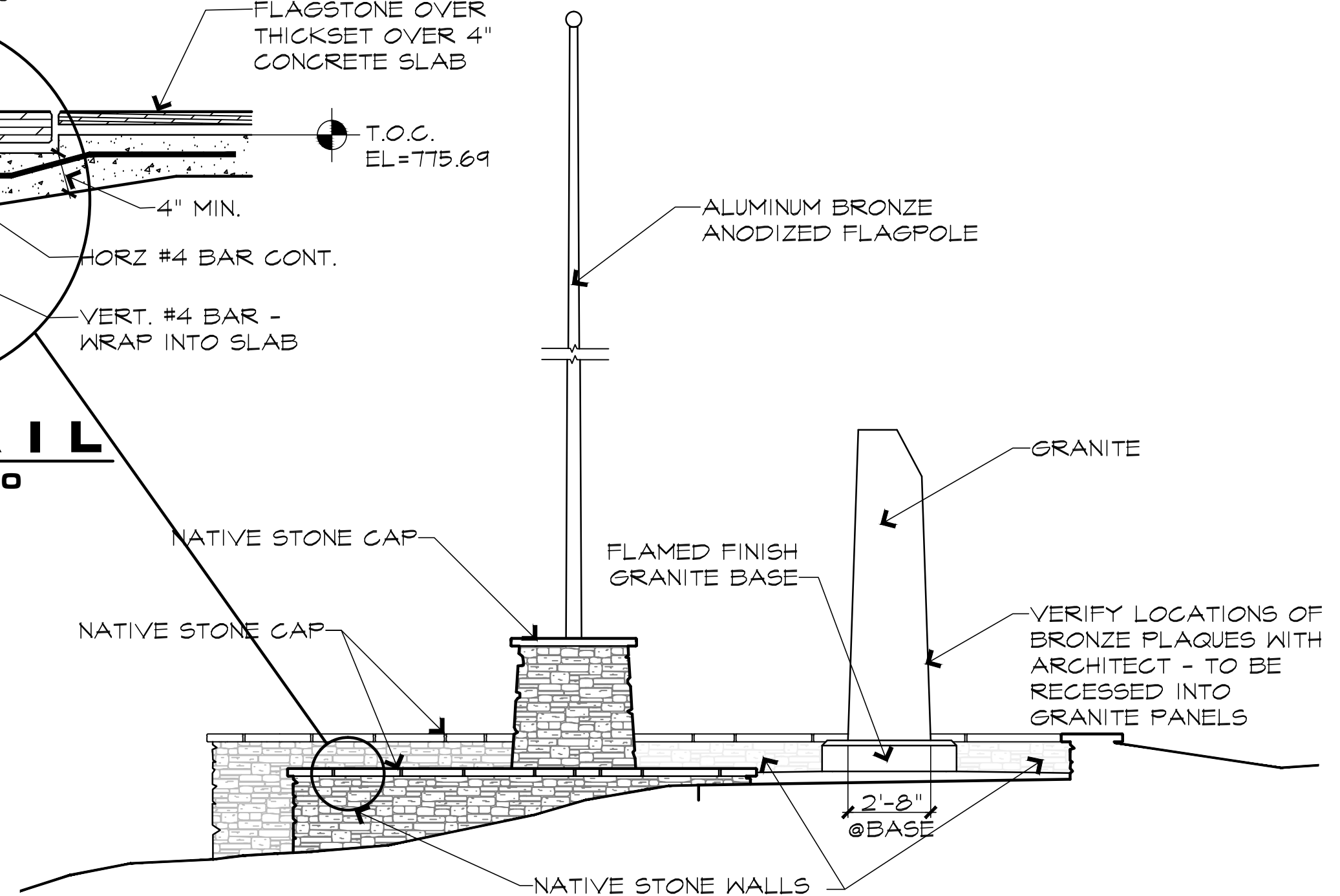
SHEET **1** OF TWO



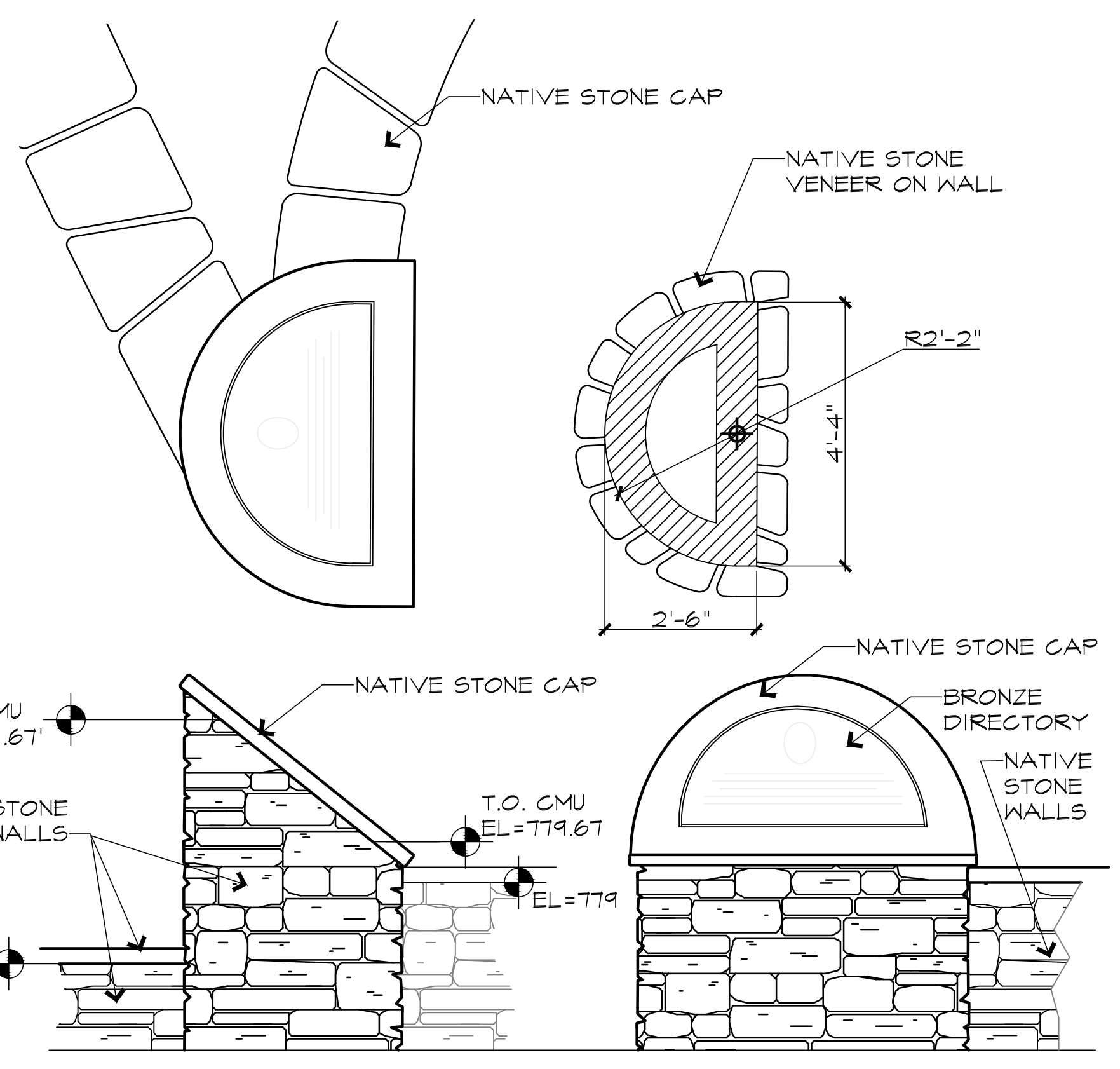
**COLUMN DETAIL**  
SCALE: 1/2" = 1'-0"



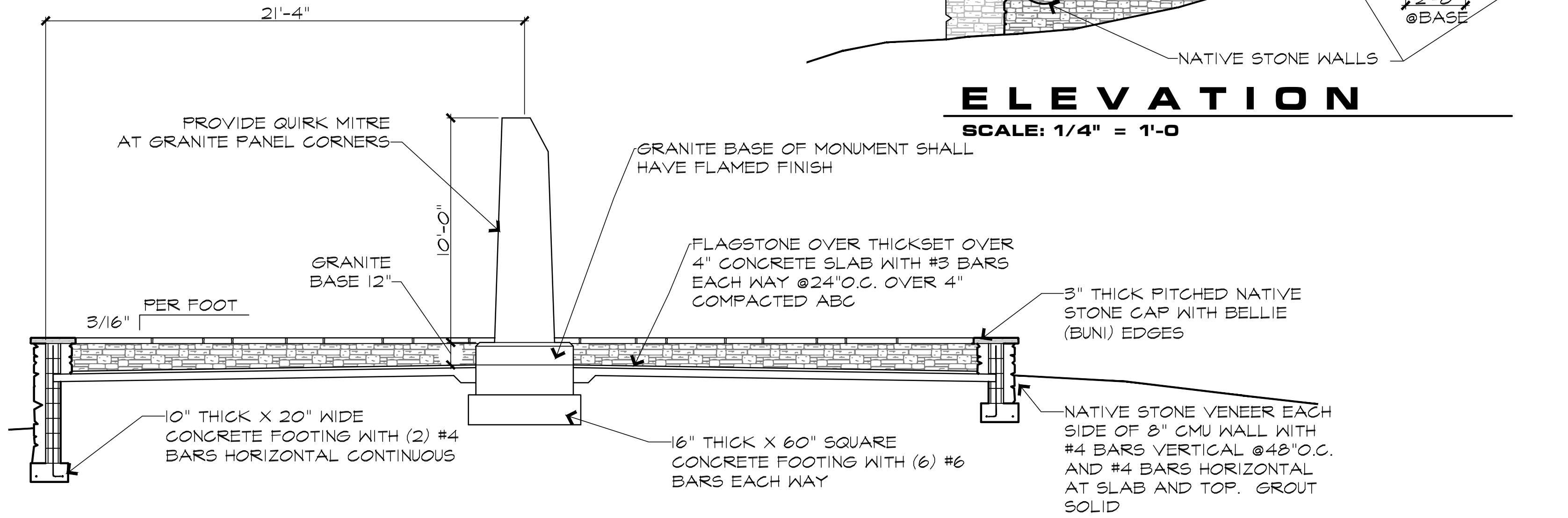
**DETAIL**  
SCALE: 1" = 1'-0"



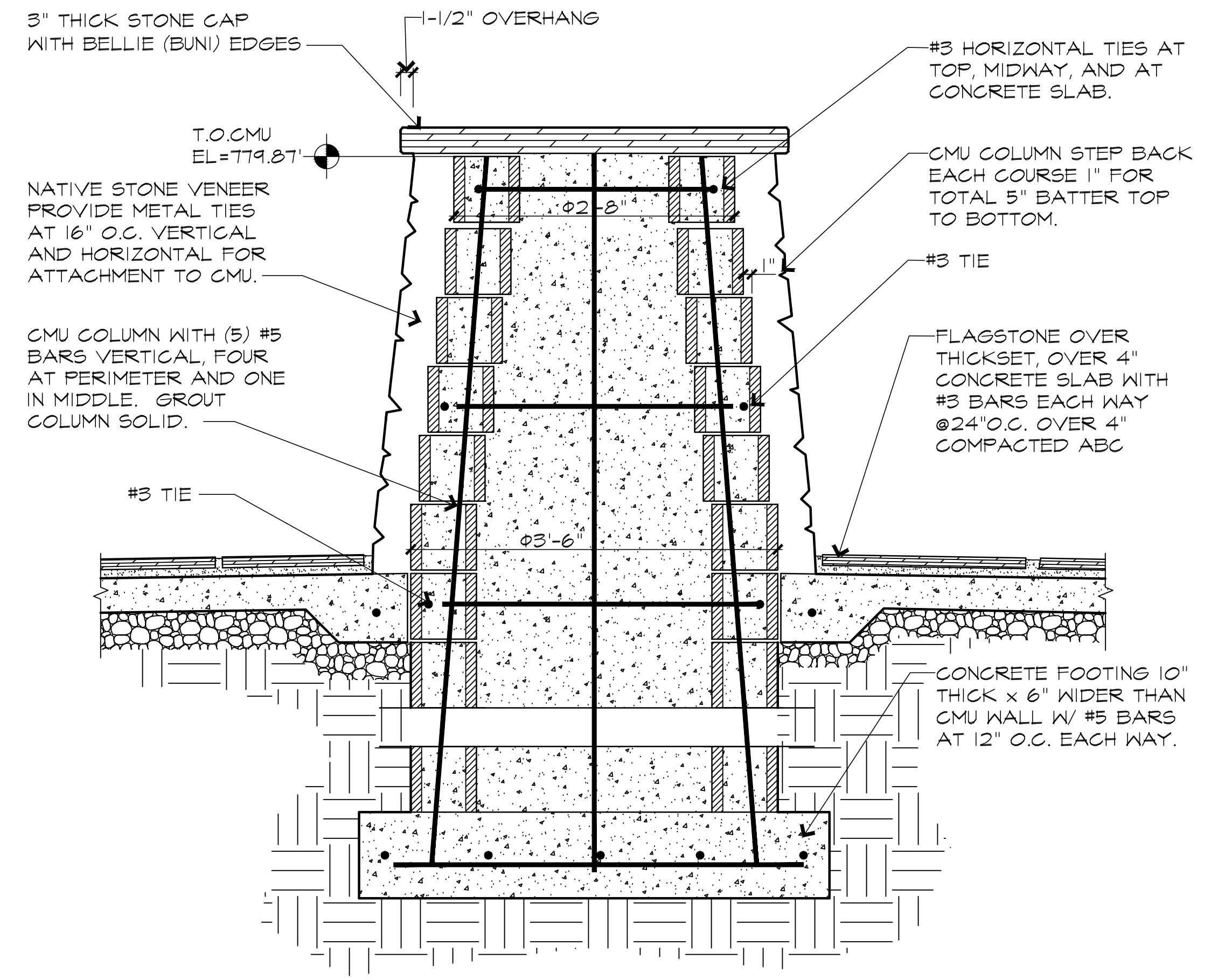
**ELEVATION**  
SCALE: 1/4" = 1'-0"



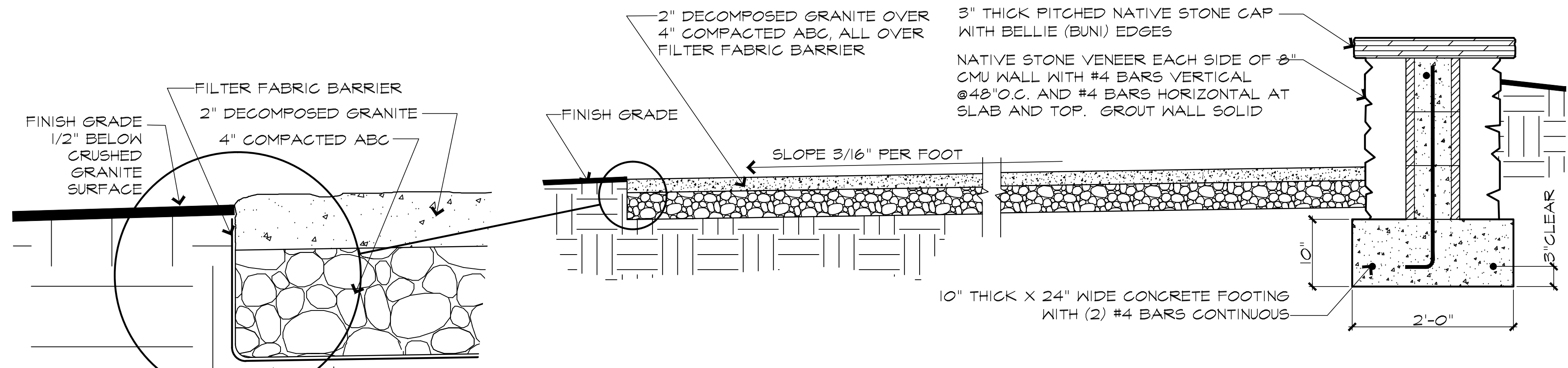
**VIEWS AT PLAQUE & BASE**  
SCALE: 1/2" = 1'-0"



**SECTION "B" AT MONUMENT**  
SCALE: 1/4" = 1'-0"



**SECTION AT FLAG POLE**  
SCALE: 1" = 1'-0"



**SECTION "A" AT PATH**  
SCALE: 1" = 1'-0"

**DETAIL**  
SCALE: 1" = 3"

**Bob Woods Architect**  
1473 GRAY BAR DRIVE  
COTTONWOOD, ARIZONA, 86326  
PHONE: (928) 646 - 5989  
FAX: (928) 646 - 5989

**Ronald Reagan Monument  
Del Punta Viewing Site**  
Vandenberg Air Force Base, California  
For: Riki M. Ellison MDA

**Elevations, Sections &  
Details**  
SCALE: AS SHOWN  
19 MAY 2007

SHEET **2** OF TWO